



Control - Upgrades

HEINKEL HF Inverting-Filter-Centrifuge

Centrifuge Service and more.....

- ✓ Centrifuge Maintenance Service
- ✓ Centrifuge Overhaul
- ✓ Centrifuge MSR Service
- ✓ ATEX Upgrades
- ✓ Spare parts
- ✓ Upgrades and Reconstruction
- ✓ Filter Cloth Design and Manufacture
- ✓ Process Optimization
- ✓ Process Start Up Support
- ✓ New Centrifuge Sales
- ✓ Centrifuge Refurbishment and Sales
- ✓ Rental machines
- ✓ Pilot / Kilo machines



CONTECMA C.S. GmbH
worldwide Centrifuges Service

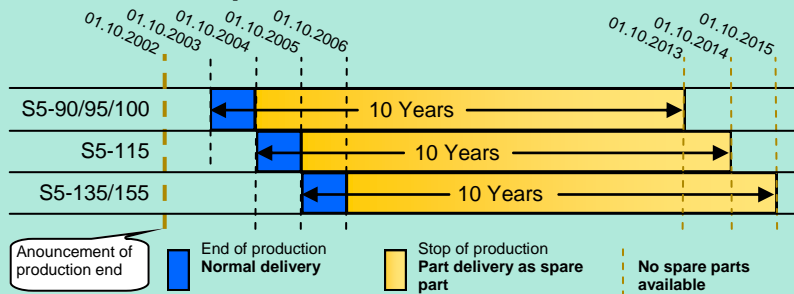
Siemensstraße 23 ☎ 74343 Sachsenheim
Tel.: +49(7147)27697-0 ☎ Fax.: +49(7147)27697-29
Info@contecma-cs.de ☎ www.contecma-cs.de

S5 => S7 Upgrade Visualisation-Upgrade



- ⇒ Do you Operate with a Siemens S5 SPS control unit?
- ⇒ Do you have a Trion or Siemens Operation panel?
- ⇒ Does your Control System Require Modification?
- ⇒ Do you require more Process or Recipe Flexibility?

Discontinued production of SIEMENS S5 PLC since 2003



Since 2003 the production and support of the S5 components has ceased.

Only units that currently exist are still available as spare parts.

Many visualisation devices are no longer available



Many operating devices and visualisation devices, for example "Trion EExTerm" and "Siemens OP30" are no longer produced and spare part manufacture is discontinued.

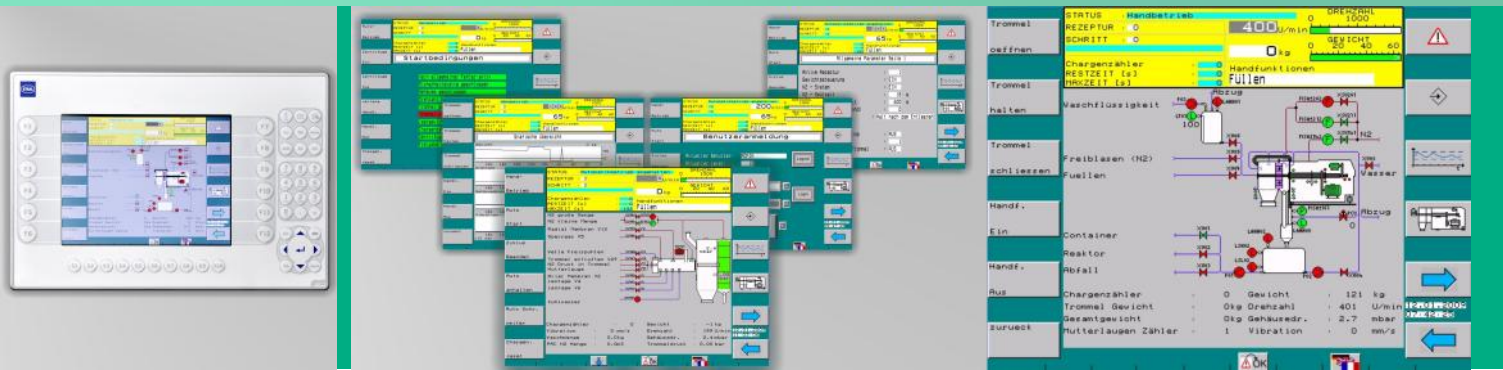
How long runs your PLC or visualisation device

Statistical hardware life span	
HMI	ca. 5-7 years
PLC—System	ca. 12 years
E/A-Device	ca. 16-20 years

Even the best hardware has a limited life span and requires updating from time to time ensuring downtime is minimised.

Quelle: http://www.siemens.de/industry/automation/ost/news/Documents/Folien_S5-Migration.pdf

S5 => S7 Upgrade Visualisation-Upgrade



Offering you a Flexible, Competitive, & Complete Centrifuge Support Service

Take advantage of benefits that are only available from us

- ✓ 24h Fault & Support Hotline
- ✓ Cost-effective alternative to manufacturer
- ✓ Short shutdown time of the machine
- ✓ Short project term
- ✓ Large stock of Siemens S5 PLC and visualization components
- ✓ In-house electrical and MCC / PLC cabinet construction
- ✓ Mechanical and Electrical Turnkey Projects
- ✓ Customer-optimised touchscreen visualization
- ✓ Standardised and cost-optimised upgrade bundles
- ✓ Remote maintenance via ethernet integrated by default in the upgrade

+49 (7147) 27697-112

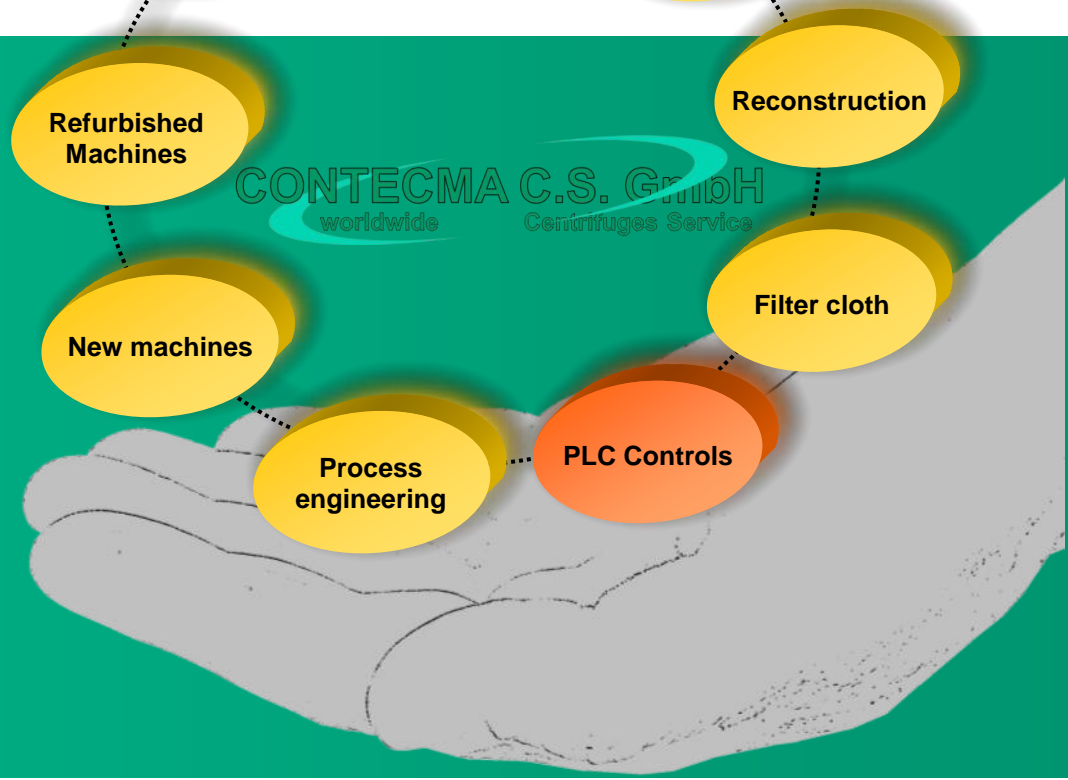
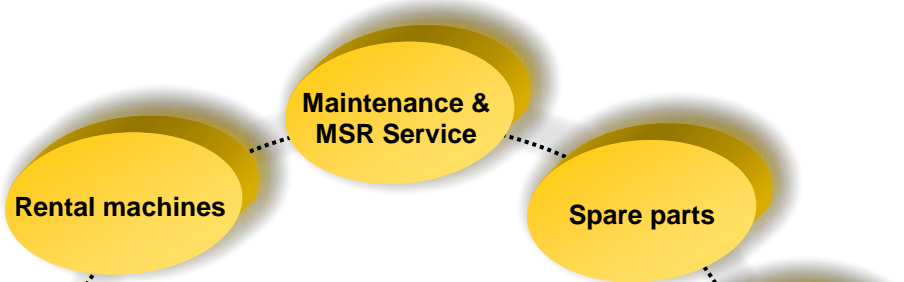
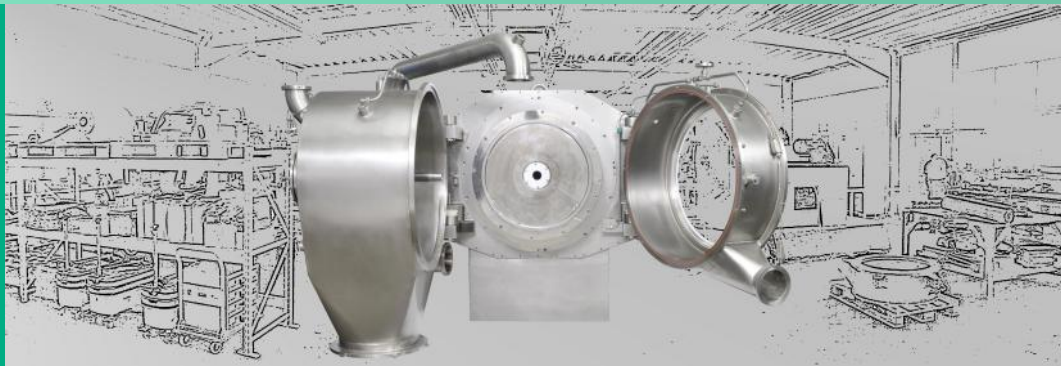
**Cost-effective alternative to
manufacturers**

1 Week

6-8 Weeks



Siemensstraße 23 ☎ 74343 Sachsenheim
Tel.: +49(7147)27697-0 ☎ Fax.: +49(7147)27697-29
Info@contecma-cs.de ☎ www.contecma-cs.de



We do more...
.....than just service