

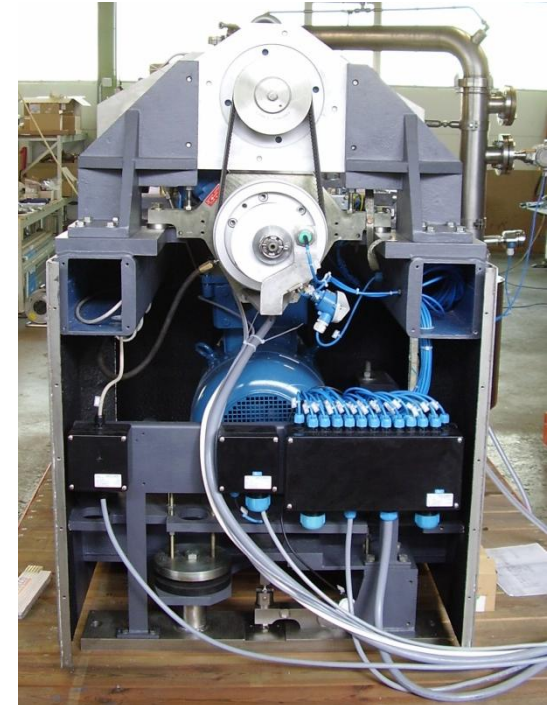
**Anlieferzustand**



**Lackiert mit elektrisch leitfähiger Farbe**



**Auftrag des Dämmschutzes**





**Anlieferungszustand**



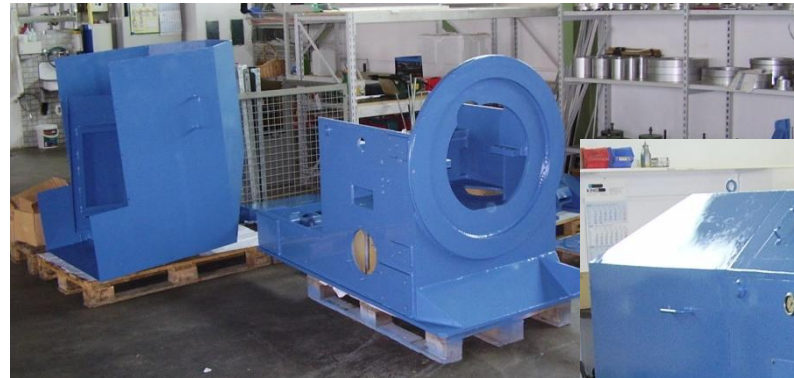
**Maschinenständer**



**Zerlegt bis auf die letzte Schraube**

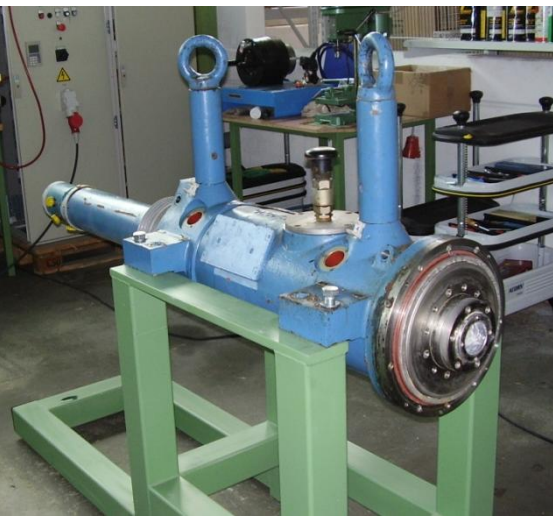


**Alle Stahlteile neu lackiert**



**HF600 im überholten Zustand**

# Überholung eines Lagerkörpers



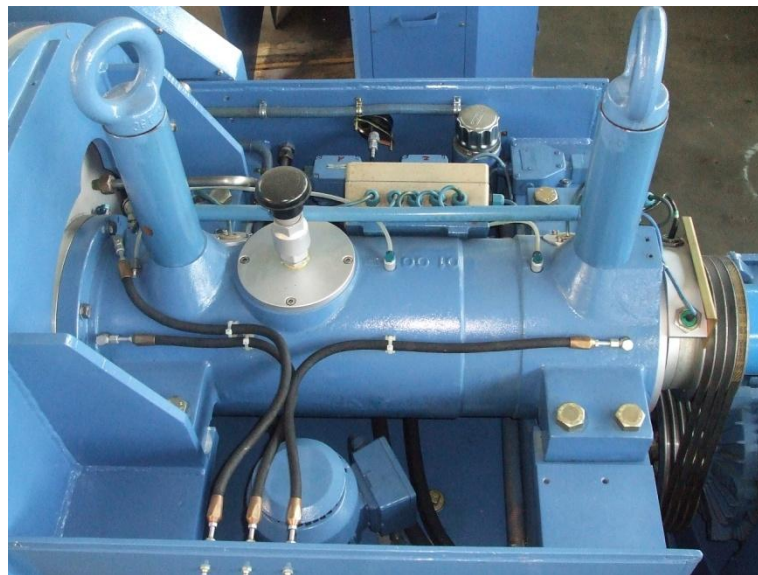
Anlieferungszustand

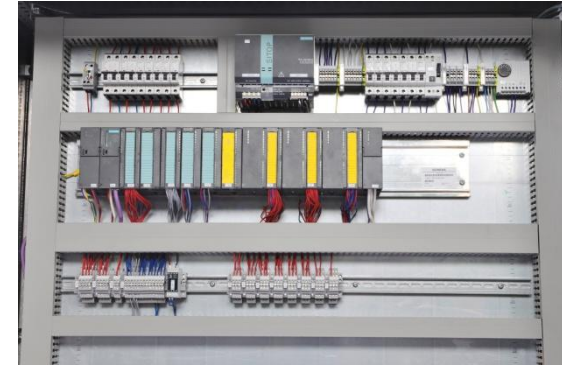


Rissprüfung nach Farbeindringverfahren



Einzelteile





**Sonderausführung der  
Schaltschränke in Edelstahl**

**Steuerschrank**

**Fehlersichere Steuerung**



**Lokaler Bedienschrank**

**Inertisierungseinheit**

Automatic STATUS: Manual Mode SPEED: 1000 rpm  
 RECIPE: 0 WEIGHT: 0 kg  
 STEP: 0 Filling  
 Discharge Counter: 0 Manual Function  
 TIME LEFT (s): 0  
 MAX TIME (s): 0

**CONTECMA C.S. GmbH**  
worldwide Centrifuges Service

Siemensstraße 23  
 D-74343 Sachsenheim  
 Tel.: +49 (0) 7147 / 27697-0  
 E-Mail: info@contecma-cs.de  
 Homepage: www.contecma-cs.de  
 Maschine No: 1270/11  
 Client: Rexim

Startfenster

Automatic STATUS: Manual Mode SPEED: 400 rpm  
 RECIPE: 0 WEIGHT: 0 kg  
 STEP: 0 Filling  
 Discharge Counter: 0 Manual Function  
 TIME LEFT (s): 0  
 MAX TIME (s): 0

Washing Liquid  
 Blow out (N2)  
 Filling  
 Container  
 Reactor  
 Waste

Discharge Counter: 1 Weight: -38 kg  
 Weight in drum: 0kg Speed: 401 rpm  
 Total Weight: 0kg Hous. Press.: 2.5 mbar  
 Mother Liq. Counter: 1 Vibration: 0 mm/s

Prozessschema der Zentrifuge

Manual STATUS: Automatic hold SPEED: 0 rpm  
 RECIPE: 0 WEIGHT: 0 kg  
 STEP: 0 Filling  
 Discharge Counter: 0 Manual Function  
 TIME LEFT (s): 0  
 MAX TIME (s): 0

N2 large volume  
 N2 small volume  
 Radial membrane V13  
 Reverse Gas V5  
 Clean Shaft  
 Vent Bowl V29  
 N2 Pressure to Bowl  
 Suspension  
 Axial Membrane V2  
 Leakage V4  
 Leakage V6  
 Cooling Water

Discharge Counter: 0 Weight: -1 kg  
 Vibration: 0 mm/s Speed: 199 rpm  
 Wash Volume: 0.0kg Hous. Press.: 2.4 mbar  
 PAC N2 Volume: 0.0m3 Bowl Pressure: 0.00 bar

Prozessschema des PAC-Systems

Open STATUS: Manual Mode SPEED: 800 rpm  
 RECIPE: 0 WEIGHT: 65 kg  
 STEP: 0 Filling  
 Discharge Counter: 0 Manual Function  
 TIME LEFT (s): 0  
 MAX TIME (s): 0

Graphical Overview  
 Weight: 0 kg  
 Speed: 807 rpm  
 Hous. Pressure: 2.7 mbar  
 Vibration: 0 mm/s

Langzeit-Aufzeichnung von Prozessdaten

Manual STATUS: Automatic hold SPEED: 200 rpm  
 RECIPE: 1 WEIGHT: 65 kg  
 STEP: 1 Filling  
 Discharge Counter: 0 Manual Function  
 TIME LEFT (s): 0  
 MAX TIME (s): 0

User login  
 Current User: ADMIN  
 Current Level: 10  
 User: admin  
 Password: [ ]  
 Login  
 Logout

Benutzerverwaltung  
 User Management  
 Gestion des utilisateurs

Benutzerverwaltung

Manual STATUS: Automatic hold SPEED: 200 rpm  
 RECIPE: 1 WEIGHT: 65 kg  
 STEP: 1 Filling  
 Discharge Counter: 0 Manual Function  
 TIME LEFT (s): 0  
 MAX TIME (s): 0

Filling by time  
 Speed: 0 rpm  
 Filling Valve open: 0 s  
 Maximum Weight: 0 kg  
 Minimum weight: 0 kg  
 Maximum step time: 0 s

Store  
 cancel

Eingabefenster der Prozessdaten